



Shaler Area School District

## SCOTT PRIMARY SCHOOL



Project Progress  
March 09, 2018



# MEP's Continue @ Administration

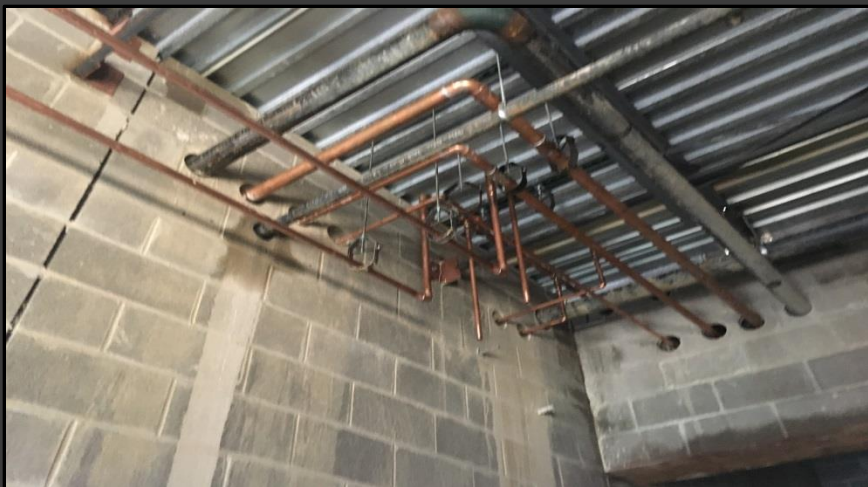


**Massaro**  
CM SERVICES, LLC





# MEP's Continue @ Cafeteria

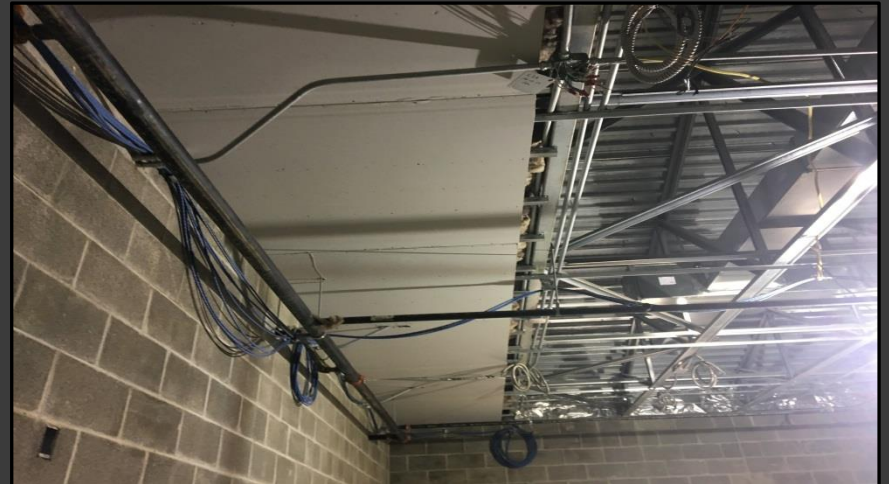


**Massaro**  
CM SERVICES, LLC





# Drywall Continues



**Massaro**  
CM SERVICES, LLC



# Block Filler Continues

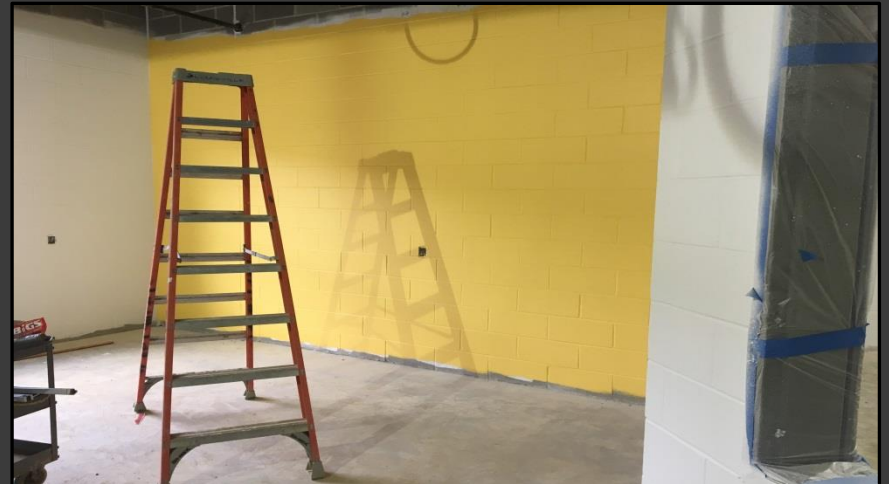


**Massaro**  
CM SERVICES, LLC





# Painting Continues



**Massaro**  
CM SERVICES, LLC

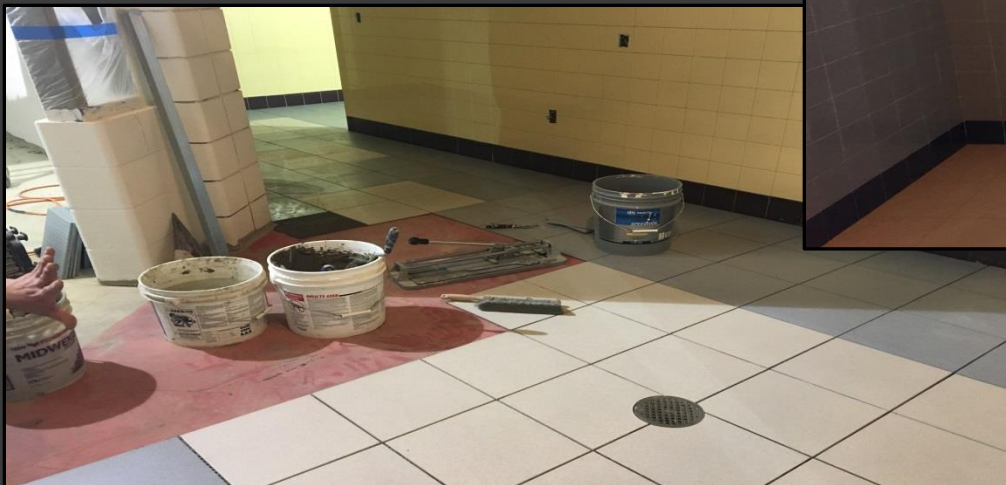


# Ceramic Tile Continues in the Gang Bathrooms





# Ceramic Tile Continues in the Gang Bathrooms



**Massaro**  
CM SERVICES, LLC





# Ceramic Tile Continues In the Staff Bathrooms



**Massaro**  
CM SERVICES, LLC



# Gymnasium







# West Entry and Loading Dock



**Massaro**  
CM SERVICES, LLC



# North Elevation View

March 09, 2018



**Massaro**  
CM SERVICES, LLC





# South Elevation View

March 09, 2018



**Massaro**  
CM SERVICES, LLC



# Pull Planning

## Week of March 05, 2018

PRIME	MON.	TUES.	WED.	THUR.	FRI.	S.O.G.
A-1 SARGENT	<ul style="list-style-type: none"> <li>- Lighting Controls Gr.F.</li> <li>- Rm. 1000 C/D</li> </ul>		Library Inspection?			<ul style="list-style-type: none"> <li>- Library Inspection</li> <li>- Begin Terminations A/B</li> </ul>
NELLO	<ul style="list-style-type: none"> <li>- PA - Gym Roof</li> <li>- Gr. F. Floor</li> <li>- Gr. F. Floor Tiles B/R</li> <li>- PA A/B Standing Seam</li> <li>- Roof Blocking</li> </ul>	<ul style="list-style-type: none"> <li>- PA - Kitchen Roof</li> <li>- OTIS 7</li> </ul>				<ul style="list-style-type: none"> <li>- Complete Gym Roof</li> <li>- Begin Kitchen Roof</li> <li>- Complete Gr. F. Classroom Wall Tile</li> <li>- Begin Gr. F. Classroom Ties/Ties</li> <li>- Begin Gr. F. Finish Coat Paint</li> </ul>
RAM	<ul style="list-style-type: none"> <li>- T/F Gr. F. B Bookshelves</li> <li>- Sound Booths Halls</li> <li>- A/B 1st Floor</li> <li>- Dining Room Ceiling</li> </ul>					<ul style="list-style-type: none"> <li>- Complete T/F Gr. F. Bookshelves</li> <li>- Begin Dining Room Ceiling</li> </ul>
HARRIS	<ul style="list-style-type: none"> <li>- Patch A/B</li> <li>- North Wall Gym C/D</li> <li>- 2nd Room Door</li> <li>- ABBAC Junior Hall</li> <li>- RENTED COMPLETE</li> </ul>					<ul style="list-style-type: none"> <li>- Complete N. Gym Wall C/D</li> <li>- Begin N. Gym Wall Back</li> <li>- Complete Back A. RENTED</li> <li>- Complete Music Room Door &amp; Chase</li> </ul>
VABEL	<ul style="list-style-type: none"> <li>- Misc. Branch Lines</li> <li>- Sprinklers Area C</li> </ul>	<ul style="list-style-type: none"> <li>- Gas to make up air</li> </ul>				<ul style="list-style-type: none"> <li>- Area C/D Inspections (R.I.)</li> </ul>
HRANEC	<ul style="list-style-type: none"> <li>- Area C Corridor</li> <li>- C Restroom</li> <li>- Kitchen Duct</li> </ul>		<ul style="list-style-type: none"> <li>- Area B Exhaust Duct</li> </ul>			<ul style="list-style-type: none"> <li>- Begin C Corridor/Kitchen Duct</li> <li>- Complete B Exhaust Duct</li> </ul>
EAST WEST	<ul style="list-style-type: none"> <li>- RI C/D</li> </ul>	<ul style="list-style-type: none"> <li>- Misc. Gr. F.</li> </ul>	<ul style="list-style-type: none"> <li>- Band Room Chase</li> </ul>	<ul style="list-style-type: none"> <li>- Roof CURB #6</li> </ul>		<ul style="list-style-type: none"> <li>- Complete C/D R.I.'s</li> <li>- RTU #6 CURB</li> <li>- Band Room Ceiling Piping</li> </ul>







# NEW PRIMARY SCHOOL ON SCOTT AVE.

Scheduled Work for Upcoming Weeks

- Continue MEP Systems
- Interior CMU
- Interior Drywall
- Interior Ceramic
- Interior Painting
- Roofing



**Massaro**  
CM SERVICES, LLC